

// 05 ROLED PRODUCT SERIES

THE CLASSIC AMONG THE CLASSICS

RoLED

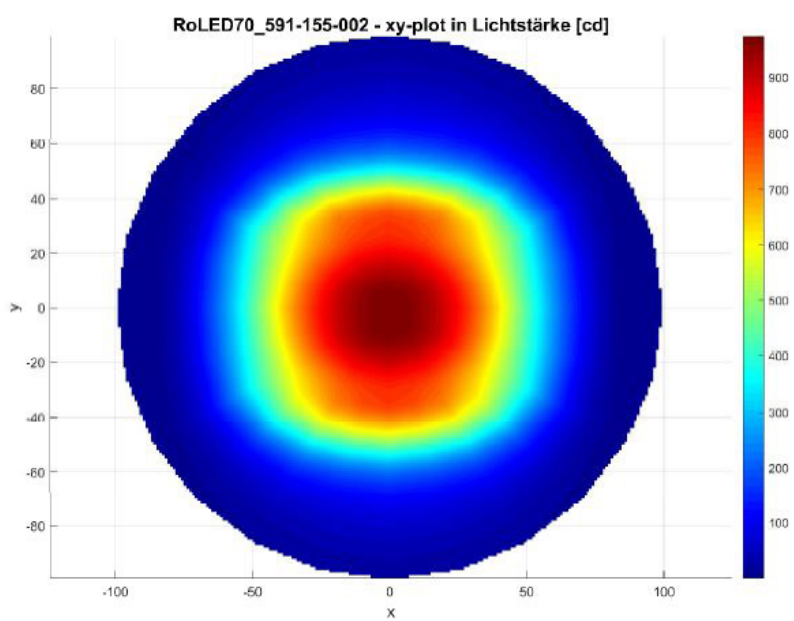
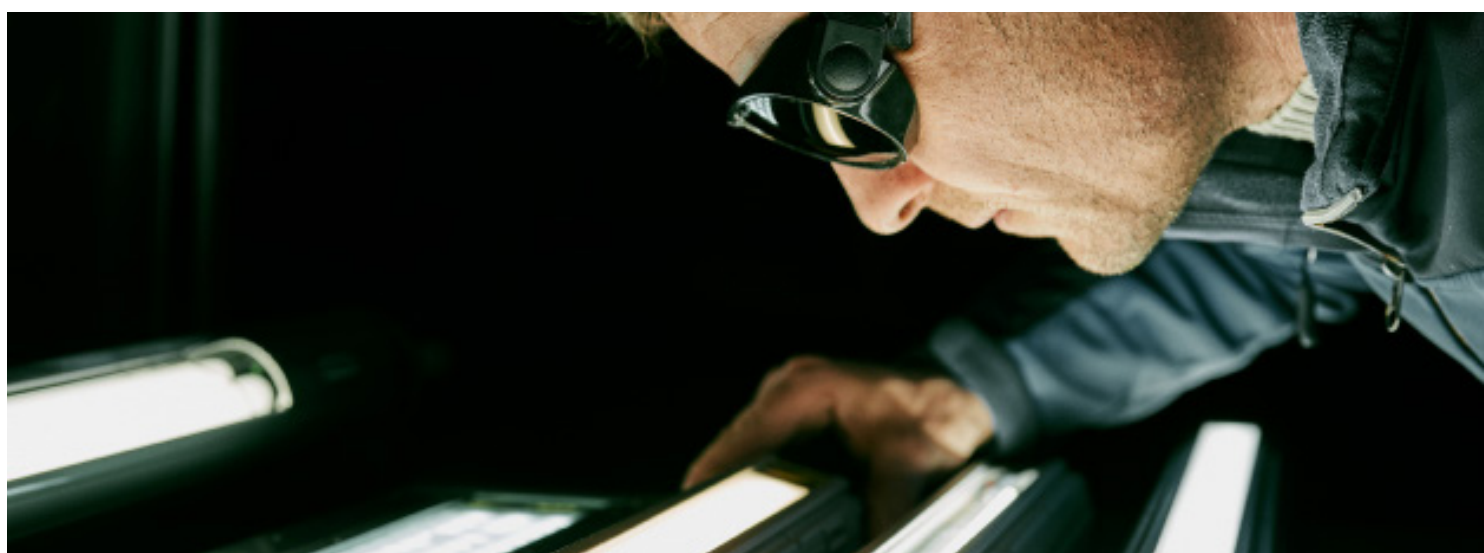
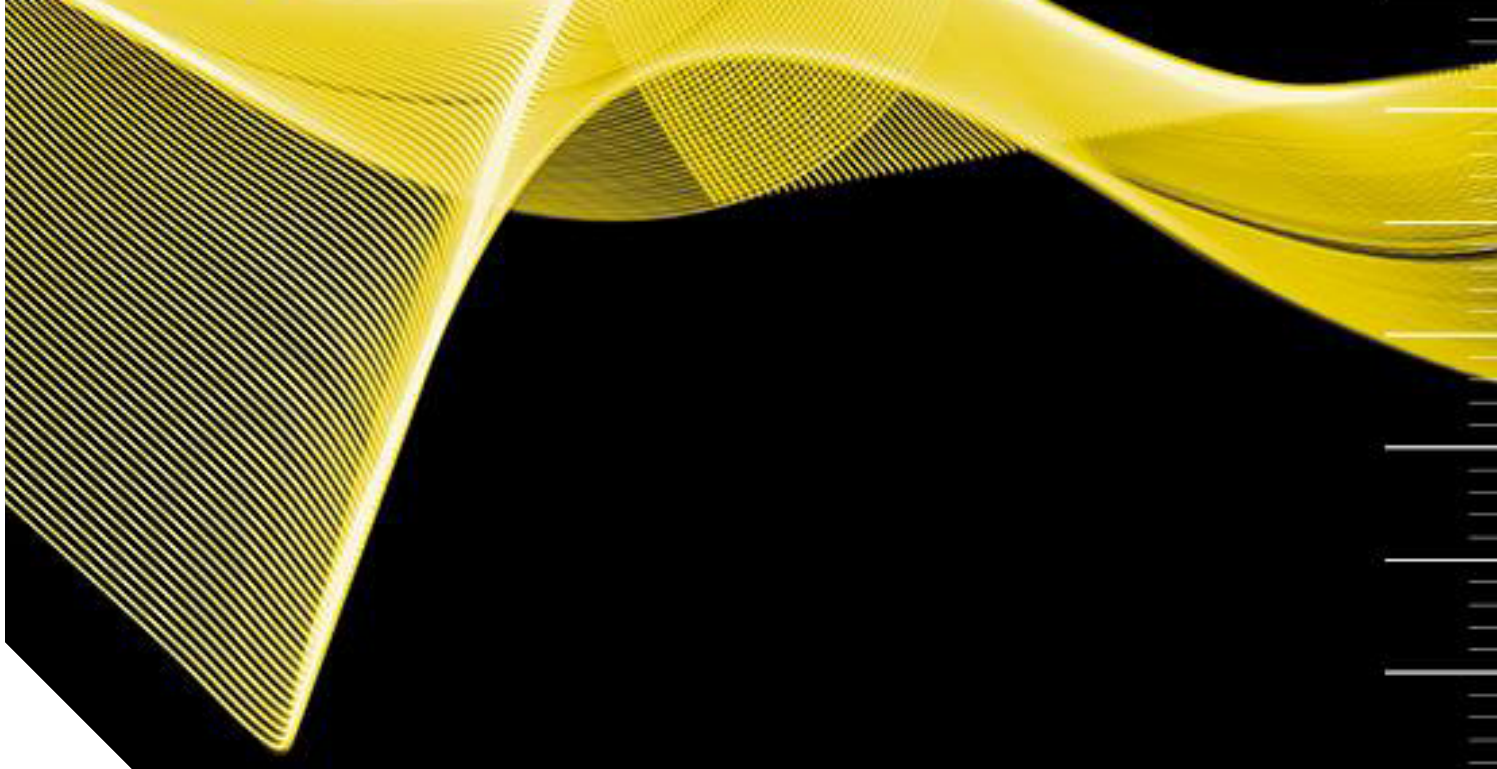
70 mm diameter tube lamps: THE classic among machine lamps! For decades the round lamp body has proven its worth and still provides proper illumination of countless machines and equipment.

Our RoLED series combines the proven and popular features of this classic with state-of-the-art LED technology inside – high-quality LEDs ensure a perfect light output!

The shape, length and connection type of many of our RoLED lamps are identical to the classical tube lamps with conventional luminaires – making the switch to modern LED technology quick and easy.

Within our RoLED product family there are many variants available: 24 volt, 230 volt, various lengths and performances, different connection types, plastic end caps or even RoLED lamps with end caps made of stainless steel – there should be something for every user!





Distribution of the luminous intensity based on
RoLED70/5002 | Item no. 591-155-002

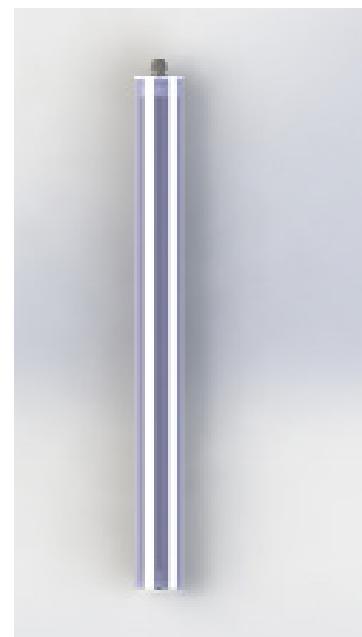
RoLED70/5002



// TECHNICAL DATA

ITEM NO.: 591-155-002

Operating voltage	24 V DC
Rated output	33,6 W
Ambient temp.	-5°C - max. 50°C
System of protection	IP67
Protection class	SK II
Weight	2,96 kg
Protective tube	Borosilicate
Lamp housing	Aluminium, anodized
Type of lighting	Tubular lamp
Scope of application	Industrial sector



// LIGHT SOURCES

Number of LEDs	120
Current	1,4 A
Lifetime	> 60.000 h
Colour rendering	Ra > 80
Energy efficiency class	A ++
Luminous flux	4200 lm
Light efficiency	125 lm / W
Light colour	5000 K

// BALLAST (external)

Output voltage	24 V DC
Output power	min. 38 W

// ELECTRICAL CONNECTION

Cable gland	M16 x 1,5 PA
Internal connection	Luster terminal

// FEATURES

- Internal aluminium body
- Resistant against the common coolants & lubricants
- LED alternative to conventional tube lamps with fluorescent tubes – simple retrofitting!
- Connection to machine voltage 24 V DC



// SHORT OVERVIEW

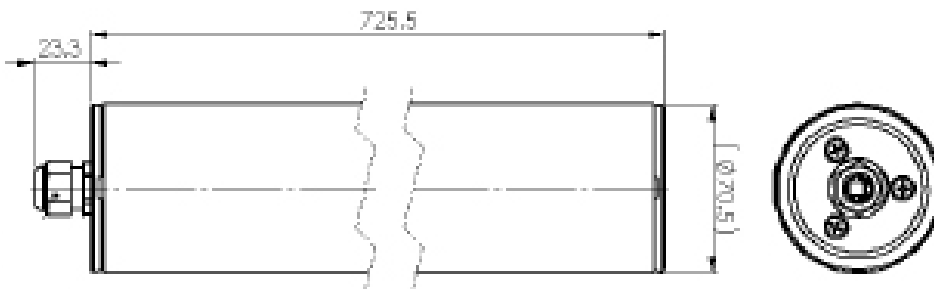
TYPE	ITEM NO.	VOLTAGE	POWER	LUMINOUS/ LUMEN	PROTECTIVE TUBE	LENGTH/MM	CONNECTION
RoLED70	591-155-002	24 V DC	33,6 W	4200	Borosilicate	725	cable gland

// VARIATIONS

TYPE	ITEM NO.	VOLTAGE	POWER	LUMINOUS/ LUMEN	PROTECTIVE TUBE	LENGTH/MM	CONNECTION
RoLED70	591-155-006	24 V DC	16,8 W	2100	Borosilicate	535	cable gland
RoLED70	591-155-017	24 V DC	33,6 W	4200	Borosilicate	725	M12, lateral
RoLED70	591-155-022	24 V DC	50,4 W	6300	Borosilicate	1000	7/8"-connector
RoLED70	591-155-023	24 V DC	33,6 W	4200	PMMA	725	wired

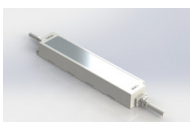
Other variations available! For further information, please contact us.

// TECHNICAL DRAWING



// FIXING / ACCESSORIES (optional)

Power supply SELV (IP66)

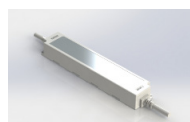


ITEM NO. 213-820-212

Input: 220-240 V | 0-60 Hz

Output: 24 V DC | max. 40 W

Power supply SELV (IP64)

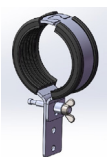


ITEM NO. 213-820-207

Input: 110-240 V | 50-60 Hz

Output: 24 V DC | max. 100 W

Fixing clamps



ITEM NO. 599-001-001

fixing clamp Ø70 mm, galvanised, gerade



ITEM NO. 599-001-002

fixing clamp Ø70 mm, galvanised, angle plug, wall clearance 70 mm, mit distance bush



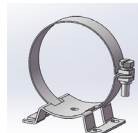
ITEM NO. 599-001-003

fixing clamp Ø70 mm, galvanised, angle plug, wall clearance 100 mm



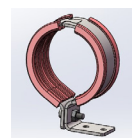
ITEM NO. 599-001-004

fixing clamp Ø70 mm, galvanised, straight, with distance tube



ITEM NO. 599-001-016

Tension clamp D70 mm VPE 1 pc.



ITEM NO. 599-001-022

fixing clamp Ø70 mm, stainless steel A4, angle plug, wall clearance 70 mm

// STANDARDS

EN 55015:2016-04
EN 60598-1:2015-10
EN 62031:2015-09
UL 2108

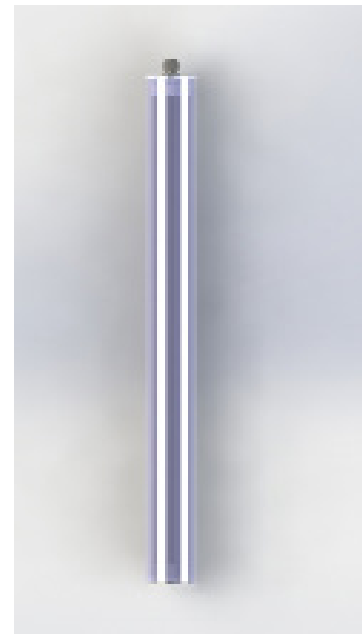
TECHMALUX

RoLED70/6001

// TECHNICAL DATA

ITEM NO.: 591-156-001

Operating voltage	230 V AC 50 Hz
Rated output	41,6 W
Ambient temp.	-5°C - max. 50°C
System of protection	IP67
Protection class	SK I
Weight	2,7 kg
Protective tube	PMMA
Lamp housing	Aluminium, anodized
Type of lighting	Tubular lamp
Scope of application	Industrial sector



// LIGHT SOURCES

Number of LEDs	120
Lifetime	> 60.000 h
Colour rendering	Ra > 80
Luminous flux	4200 lm
Light efficiency	125 lm / W
Light colour	5000 K

// BALLAST (internal)

Operating Voltage	230V AC
Power factor	0,95
Output voltage	24V DC
Output power	max. 60 W

// ELECTRICAL CONNECTION

Cable gland	M16 x 1,5 PA
Internal connection	luster terminal

// FEATURES

- Connection to 230 V AC
- Within optional fixing kit also rotatable
- Many different variants available
- Quick switch to LED possible – identical construction to conventional machine tube lamps – Ø 70

// SHORT OVERVIEW

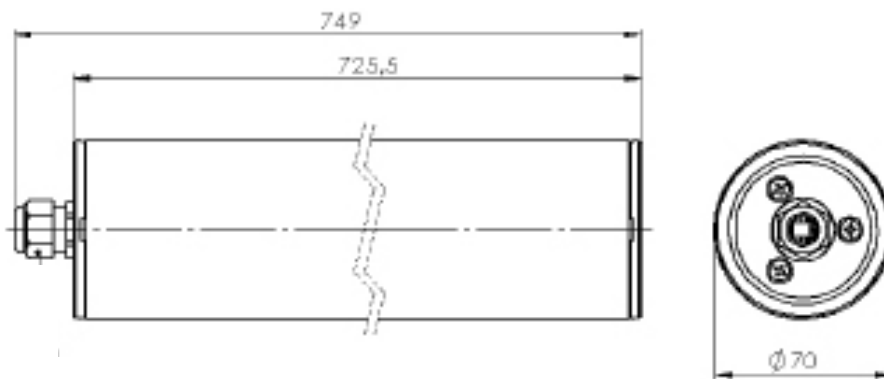
TYPE	ITEM NO.	VOLTAGE	POWER	LUMINOUS/ LUMEN	PROTECTIVE TUBE	LENGTH/MM	CONNECTION
RoLED 70	591-156-001	230 V AC	41,6 W	4200	PMMA	725	cable gland

// VARIATIONS

TYPE	ITEM NO.	VOLTAGE	POWER	LUMINOUS/ LUMEN	PROTECTIVE TUBE	LENGTH/MM	CONNECTION
RoLED 70	591-156-004	230 V AC	41,6 W	4200	Borosilicate	1030	pin insert R15
RoLED70	591-156-005	230 V AC	58,9 W	6300	Borosilicate	1360	cable gland
RoLED70	591-156-024	230 V AC	41,6 W	4200	PMMA	1077	cable gland
RoLED70	591-163-001	230 V AC	21,8 W	2100	PMMA	448	cable gland

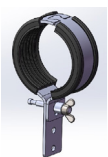
Other variations available! For further information, please contact us.

// TECHNICAL DRAWING



// FIXING (optional)

Fixing clamps



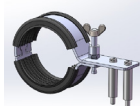
ITEM NO. 599-001-001
fixing clamp Ø70 mm, galvanised, gerade



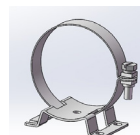
ITEM NO. 599-001-002
Fixing clamp Ø70 mm, galvanised, angle plug, wall clearance 70 mm, mit distance bush



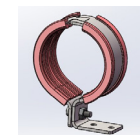
ITEM NO. 599-001-003
Fixing clamp Ø70 mm, galvanised, angle plug, wall clearance 100 mm



ITEM NO. 599-001-004
Fixing clamp Ø70 mm, galvanised, straight, with distance tube



ITEM NO. 599-001-016
Tension clamp D70 mm VPE 1 pc



ITEM NO. 599-001-022
Fixing clamp Ø70 mm, stainless steel A4, angle plug, wall clearance 70 mm

// STANDARDS

EN 55015:2016-04
EN 60598-1:2015-10
EN 62031:2015-09
EN 61000-4-4:2013-04
EN 61000-3-2:2015-03
EN 6100-4-5:2015-03
EN 61000-3-3:2014-03
EN 61000-4-2:2009-12
EN 61373:2011-04
EN 50155:2018-05

TECHMALUX

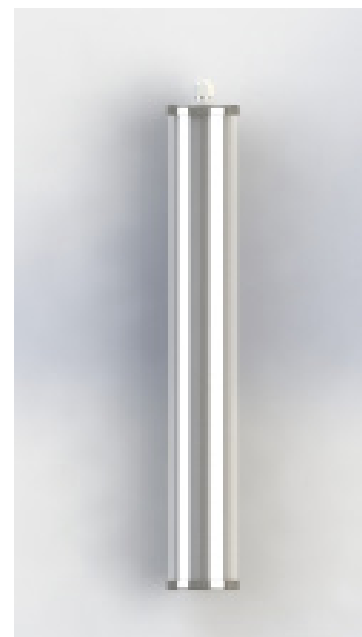
RoLED70/6026

**Stainless
steel**

// TECHNICAL DATA

ITEM NO.: 591-156-026

Operating voltage	230 V AC 50 Hz
Rated output	27,1 W
Ambient temp.	-5°C - max. 50°C
System of protection	IP67
Protection class	SK I
Weight	2,03 kg
Protective tube	PMMA
Lamp housing	Aluminium, anodized
Type of lighting	Tubular lamp
Scope of application	Industrial sector



// LIGHT SOURCES

Number of LEDs	84
Lifetime	> 60.000 h
Colour rendering	Ra > 80
Luminous flux	2940 lm
Light efficiency	125 lm / W
Light colour	5000 K

// BALLAST (internal)

Operating voltage	230V AC
Power factor	0,95
Output voltage	24V DC
Output power	max. 60 W

// ELECTRICAL CONNECTION

Cable gland	M16 x 1,5 PA
Internal connection	luster terminal

// FEATURES

- High-quality end caps made of stainless steel – this lamp is especially suitable for use in the food sector
- Internal aluminium body
- Several mounting options available (accessory)
- Popular LED alternative to conventional tube clamps

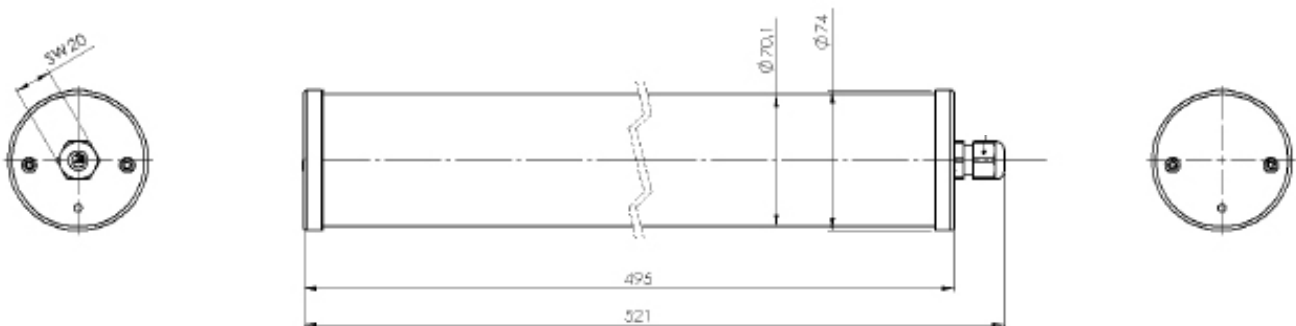
// SHORT OVERVIEW

TYPE	ITEM NO.	VOLTAGE	POWER	LUMINOUS/ LUMEN	PROTECTIVE TUBE	LENGTH/MM	CONNECTION
RoLED 70	591-156-026	230 V AC	27,1 W	2940	PMMA	495	cable gland

// VARIATIONS

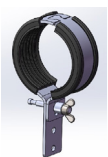
TYPE	ITEM NO.	VOLTAGE	POWER	LUMINOUS/ LUMEN	PROTECTIVE TUBE	LENGTH/MM	CONNECTION
RoLED 70	591-156-009	230 V AC	41,6 W	4200	PMMA	728	cable gland stainless steel
RoLED70	591-156-025	230 V AC	21,8 W	2100	PMMA	407	cable gland stainless steel
RoLED70	591-156-027	230 V AC	41,6 W	4200	PMMA	1035	cable gland

// TECHNICAL DRAWING



// FIXING (optional)

Fixing clamp



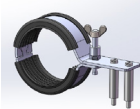
ITEM NO. 599-001-001
Fixing clamp Ø70 mm, galvanised, straight



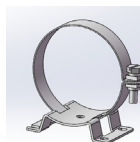
ITEM NO. 599-001-002
Fixing clamp Ø70 mm, galvanised, angle plug, wall clearance 70 mm, with distance bush



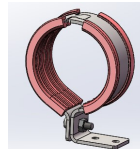
ITEM NO. 599-001-003
Fixing clamp Ø70 mm, galvanised, angle plug, wall clearance 100 mm



ITEM NO. 599-001-004
Fixing clamp Ø70 mm, galvanised, straight, with distance tube



ITEM NO. 599-001-016
Tension clamp D70 mm, VPE 1 pc



ITEM NO. 599-001-022
Fixing clamp Ø70 mm, stainless steel A4, angle plug, wall clearance 70 mm

// STANDARDS

EN 55015:2016-04
EN 60598-1:2015-10
EN 62031:2015-09
EN 61000-4-4:2013-04
EN 61000-3-2:2017-03
EN 61000-4-5:2015-03
EN 61000-3-3:2014-03
EN 61000-4-2:2009-12

TECHMALUX