

## // 10 LUMOLED K2/K3 PRODUCT SERIES

**A CLASSIC IN A NEW DESIGN**

# LumoLED K2/K3

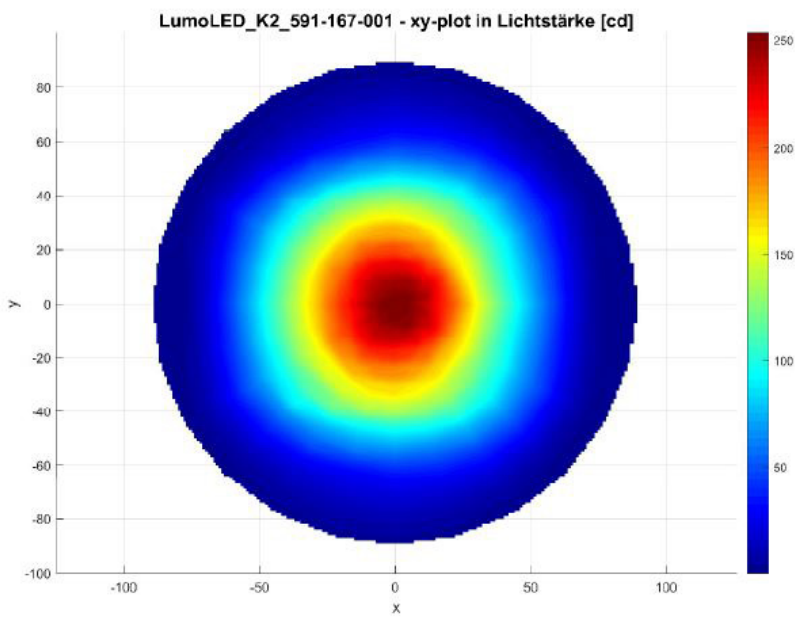
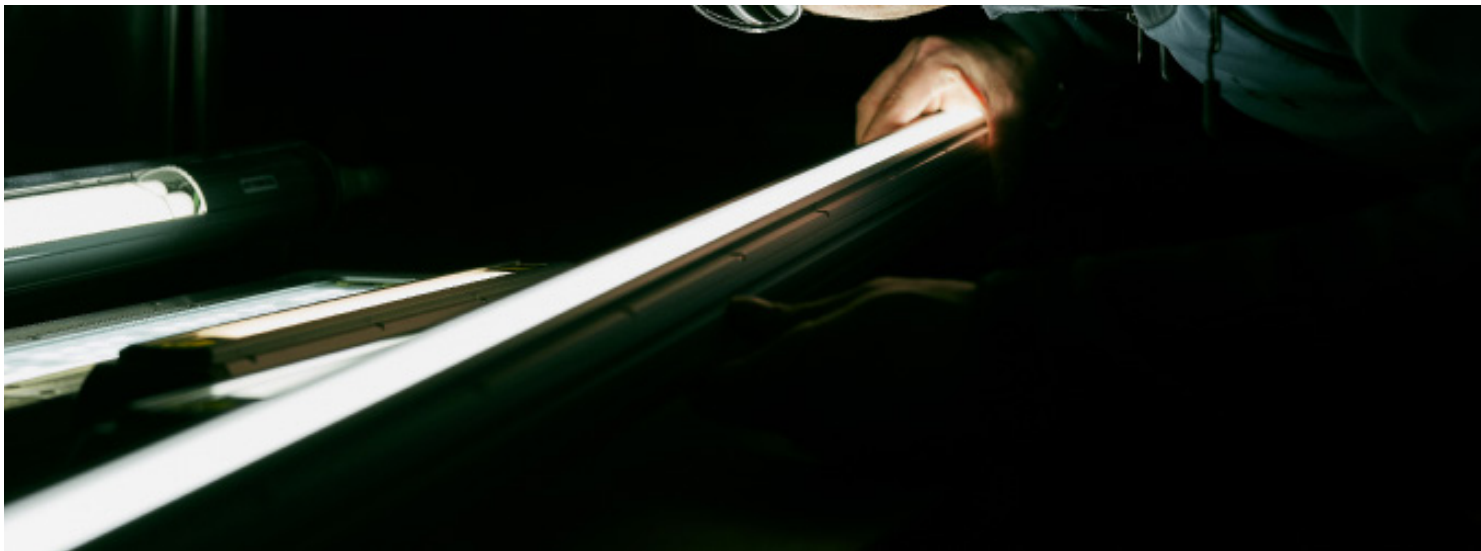
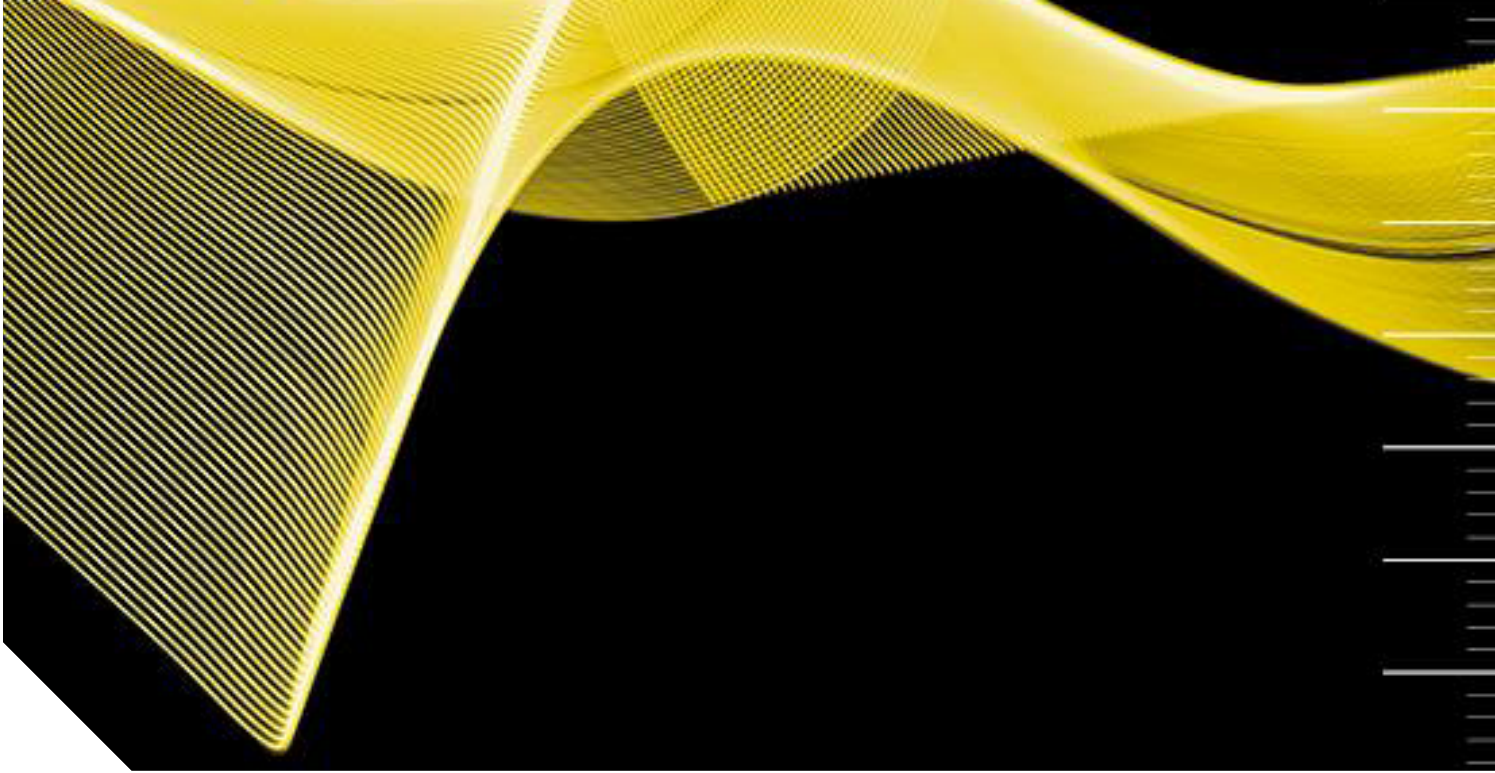
As in all families: we all have the same origin, we all have something in common, but still there are, here and there, substantial differences with everyone being unique with some rough edges. This is also true for our product family LumoLED K2/K3!

On the one hand there are the K2 lamps with the classic protective cover, on the other hand there is a K2 lamp with a borosilicate protective tube and, additionally, there is the K3 lamp design with a traditional tube lamp housing made of polycarbonate.

The differences are not only due to design. Different light output, various light colours, 24 V DC, 230 V AC, cable gland or connection cable, ... for almost every application one of our „family members“ may come into question.

What all of our K2/K3 lamps have in common: the usual TECHMALUX quality, the robust design and the reliable functionality.





Distribution of the luminous intensity based on LumoLED K2 | Item no. 591-167-001

# LumoLED K2

## // TECHNICAL DATA

### ITEM NO.: 591-027-004

Operating voltage	230 V AC   50 Hz
Rated output	11 W
Ambient temp.	-5°C - max. 40°C
System of protection	IP67
Protection class	SK II
Weight	0,65 kg
Cover	Borosilicate
Lamp housing	Polyamid
Type of lighting	Tubular lamp
Scope of application	Industrial sector



## // LIGHT SOURCES

Lifetime	50.000 h
Power factor	0,96
Luminous flux	1250 lm
Light efficiency	113 lm / W
Light colour	6000 K

## // ELECTRICAL CONNECTION

Cable gland	M16x1,5 PA
Internal connection	luster terminal
Internal electrical lines	Multinorm wires

## // FEATURES

- Electrical connection in dry conditions
- Power supply cable outside of machining areas or wet conditions
- Simple and quick installation
- Protection against temporary submersion (IP67)
- Resistant against the most common coolants and lubricants

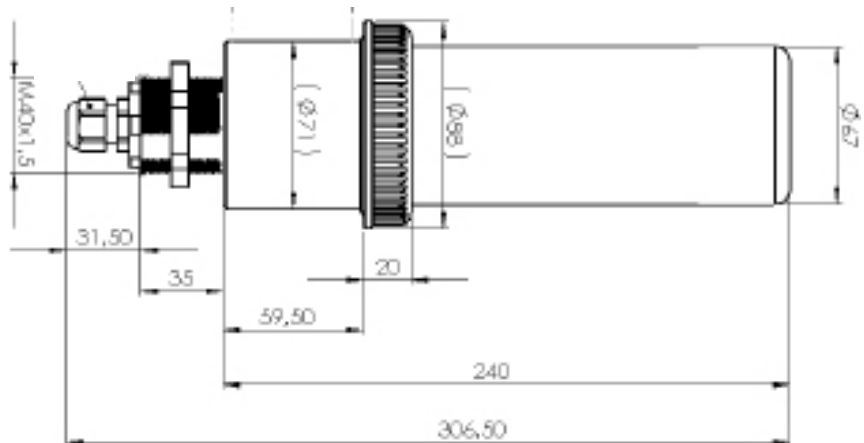
## // SHORT OVERVIEW

TYPE	ITEM NO.	VOLTAGE	POWER	LUMINOUS/ LUMEN	COVER	DIMENSIONS/ MM	CONNECTION
LumoLED K2	591-027-004	230 V AC	11 W	1250	Borosilicate	Ø 67x306,5	cable gland

## // VARIATIONS

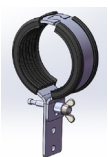
TYPE	ITEM NO.	VOLTAGE	POWER	LUMINOUS/ LUMEN	COVER	DIMENSIONS/ MM	CONNECTION
LumoLED K2	591-026-005	230 V AC	6 W	620	Borosilicate	Ø 67x213	cable gland

## // TECHNICAL DRAWING



## // FIXING (optional)

Fixing clamps



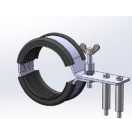
ITEM NO. 599-001-001  
Fixing clamp Ø70 mm, galvanised, straight



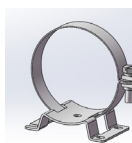
ITEM NO. 599-001-002  
Fixing clamp Ø70 mm, galvanised, angle plug, wall clearance 70 mm, mit distance bush



ITEM NO. 599-001-003  
Fixing clamp Ø70 mm, galvanised, angle plug, wall clearance 100 mm



ITEM NO. 599-001-004  
Fixing clamp Ø70 mm, galvanised, straight, with distance tube



ITEM NO. 599-001-016  
Tension clamp D70 mm VPE 1 pc.

## // STANDARDS

EN 55015:2016-04  
EN 60598-1:2015-10  
EN 62031:2015-09  
EN 61000-4-4:2013-4  
EN 61000-3-2:2015-3  
EN 61000-4-5:2015-03

**TECHMALUX**

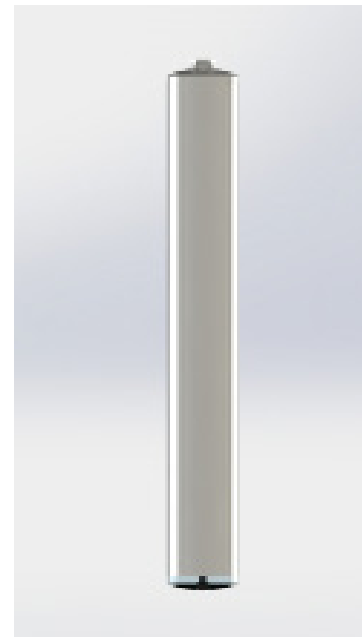


# LumoLED K3

## // TECHNICAL DATA

### ITEM NO.: 591-100-002

Operating voltage	230 V AC   50 Hz
Rated output	6 W
Ambient temp.	-5°C - max. 40°C
System of protection	IP54
Protection class	SK II
Weight	0,62 kg
Protective tube	Polycarbonat
Type of lighting	Tubular lamp
Scope of application	Industrial sector



## // LIGHT SOURCES

Lifetime	30.000 h
Colour rendering	Ra > 80
Energy efficiency class	A ++
Luminous flux	700 lm
Light efficiency	116 lm / W
Light colour	4000 K

## // ELECTRICAL CONNECTION

Type of connection	open cable end, 7m Connection cable
--------------------	--

## // FEATURES

- Robust, compact & efficient
- Space-saving installation due to slim design
- Low maintenance & service-friendly
- Resistant against the most common coolants and lubricants
- Simple installation and replaceable, if necessary

## // **SHORT OVERVIEW**

TYPE	ITEM NO.	VOLTAGE	POWER	LUMINOUS/ LUMEN	PROTECTIVE TUBE	DIMENSIONS/ MM	CONNECTION
LumoLED K3	591-100-002	230 V AC	6 W	700	PC	296x40	open cable end

## // **TECHNICAL DRAWING**



### // **STANDARDS**

EN 55015:2016-04  
EN 60598-1:2015-10  
EN 62031:2015-09  
EN 61000-4-4:2013-4  
EN 61000-3-2:2015-3  
EN 61000-4-5:2015-03  
EN 61000-3-3:2014-03

**TECHMALUX**

# LumoLED K2

## // TECHNICAL DATA

### ITEM NO.: 591-167-001

Operating voltage	24 V DC
Rated output	7,2 W
Ambient temp.	-5°C - max. 40°C
System of protection	IP67
Protection class	SK II
Weight	1,04 kg
Coverage	Borosilicate
Lamp housing	Polyamid
Type of lighting	Tubular lamp
Scope of application	Industrial sector



## // LIGHT SOURCES

Number of LEDs	28
Current	0,3 A
Colour rendering	Ra > 80
Luminous flux	1050 lm
Light efficiency	145 lm / W
Light colour	5000 K

## // BALLAST (external)

Output voltage	24 V DC
Output power	min. 12 W

## // ELECTRICAL CONNECTION

Cable gland	M16x1,5 PA
Internal connection	luster terminal, 2-pole

## // FEATURES

- Robust internal aluminium body
- In-built glare protection – glare-free work environment
- Compact and reliable light source
- Very good light output
- Protection against temporary submersion

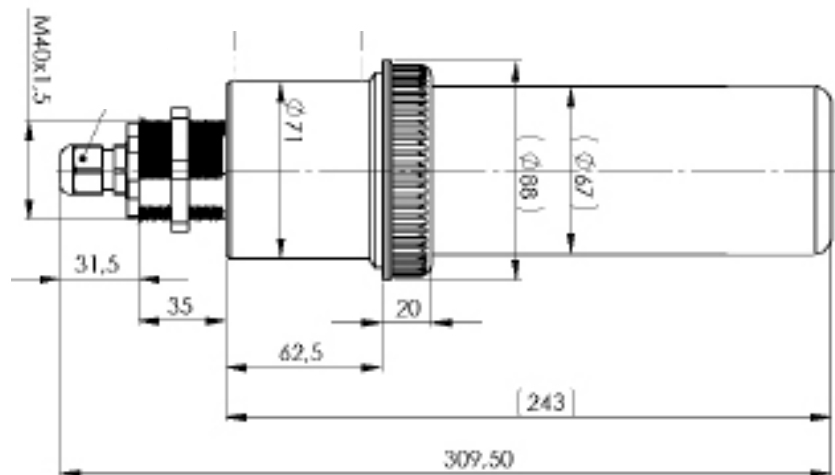
## // SHORT OVERVIEW

TYPE	ITEM NO.	VOLTAGE	POWER	LUMINOUS/ LUMEN	COVERAGE	DIMENSIONS/ MM	CONNECTION
LumoLED K2	591-167-001	24 V DC	7,2 W	1050	Borosilicate	Ø 67x309,5	cable gland

## // VARIATIONS

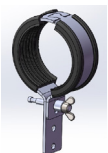
TYPE	ITEM NO.	VOLTAGE	POWER	LUMINOUS/ LUMEN	COVERAGE	DIMENSIONS/ MM	CONNECTION
LumoLED K2	591-167-002	24 V DC	7,2 W	1050	Borosilicate	Ø 67x285	M12
LumoLED K2	591-167-003	24 V DC	7,2 W	1050	Borosilicate	Ø 67x262x165	cable gland

## // TECHNICAL DRAWING



## // FIXING / ACCESSORIES (optional)

Fixing clamps



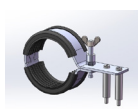
ITEM NO. 599-001-001  
Fixing clamp Ø70 mm, galvanised, straight



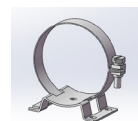
ITEM NO. 599-001-002  
Fixing clamp Ø70 mm, galvanised, angle plug, wall clearance 70 mm, mit distance bush



ITEM NO. 599-001-003  
Fixing clamp Ø70 mm, galvanised, angle plug, wall clearance 100 mm

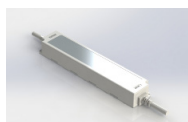


ITEM NO. 599-001-004  
Fixing clamp Ø70 mm, galvanised, straight, with distance tube



ITEM NO. 599-001-016  
Tension clamp D70 mm VPE 1 pc

Power supply SELV (IP67)



ITEM NO. 213-820-219  
Input: 110-240 V | 50-60 Hz |  
Output: 24 V DC | max. 25 W

## // STANDARDS

EN 55015:2016-04  
EN 60598-1:2015-10  
EN 62031:2015-09

**TECHMALUX**



# LumoLED K2

## // TECHNICAL DATA

### ITEM NO.: 591-167-021

Operating voltage	24 V DC
Rated output	7,2 W
Ambient temp.	-5°C - max. 40°C
System of protection	IP67
Protection class	SK II
Weight	1,48 kg
Coverage	Borosilicate
Type of lighting	Tubular lamp
Scope of application	Industrial sector



## // LIGHT SOURCES

Number of LEDs	28
Current	0,3 A
Colour rendering	Ra > 80
Luminous flux	1050 lm
Light efficiency	145 lm / W
Light colour	5000 K

## // BALLAST (external)

Output voltage	24 V DC
Output power	min. 12 W

## // ELECTRICAL CONNECTION

Connection	5 m connection cable
Internal connection	luster terminal, 2-pole

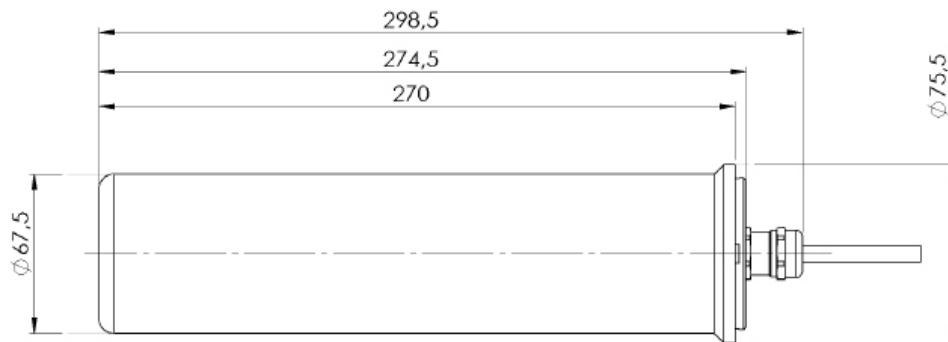
## // FEATURES

- Highly luminous machine tube lamp in miniature
- Place-saving installation due to slim design
- Connection cable, 5 m, included
- Very good light output
- Glare-free illumination due to built-in glare protection

## // SHORT OVERVIEW

TYPE	ITEM NO.	VOLTAGE	POWER	LUMINOUS/ LUMEN	COVERAGE	DIMENSIONS/ MM	CONNECTION
LumoLED K2	591-167-021	24 V DC	7,2 W	1050	Borosilicate	Ø 67,5x298,5	5 m cable

## // TECHNICAL DRAWING



## // FIXING / ACCESSORIES (optional)

Power supply SELV (IP67)



ITEM NO. 213-820-219

Input: 110-240 V | 50-60 Hz

Output: 24 V DC | max. 25 W

### Fixing clamps



ITEM NO. 599-001-001

Fixing clamp Ø70 mm, galvanised,  
straight



ITEM NO. 599-001-002

Fixing clamp Ø70 mm, galvanised,  
angle plug, wall clearance 70 mm,  
mit distance bush



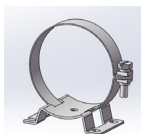
ITEM NO. 599-001-003

Fixing clamp Ø70 mm, galvanised,  
angle plug, wall clearance 100 mm



ITEM NO. 599-001-004

Fixing clamp Ø70 mm, galvanised,  
gerade, mit Distanzrohr



ITEM NO. 599-001-016

Tension clamp D70 mm VPE 1 pc

### // STANDARDS

EN 55015:2016-04  
EN 60598-1:2015-10  
EN 62031:2015-09

**TECHMALUX**